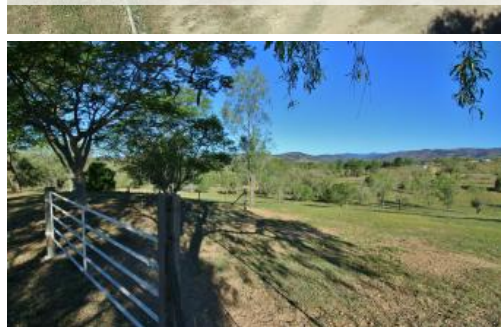


Sold



15 Salt Springs Rd, Blenheim



AFFORDABLE ACREAGE LIVING 31.8 Acres

Located between Laidley and Gatton Townships is this very neat, tidy and private property in a Elevated Position. Featuring:

- * 3 Bedroom 1 Bathroom Brick and Tile Home
- * 2 Way Bathroom Separate Bath, Shower and Toilet
- * Built-ins to 2 Bedrooms with main having Walk-in Robe
- * Separate Lounge Room with Fire Place and Reverse Cycle A/C
- * New Kitchen and Appliances with Brekkie Bar and Double Fridge Space
- * Living and Dining Area Combo, Tiled and Carpeted Floors Throughout
- * Reverse Cycle A/C to main Bedroom, Security Screens all round, Ceiling Fans
- * Separate Laundry Space, Covered and Concreted Entertaining Area
- * 2 Bay Shed Fully Concreted and Powered, Garden Shed, Approx 3m x3m Cool Room
- * 5000g and 3000G Tanks, Fully Fenced into Paddocks
- * Roof has recently been recapped
- * Gently Sloping Land Selectively Cleared, Dam, Gully
- * Elevated Position with Mountains Views

Motivated Vendors

3 Bedrooms 1 Bathroom 2 Car Spaces 31.85 ac

Price	SOLD
Property Type	Residential
Property ID	1501
Land Area	31.85 ac

Agent Details

Ramon Bachmann - 0412 751 590
Nicole Jeeves - 0428 396 589

Office Details

Laidley
150 Patrick Street Laidley QLD 4341
Australia
0754651493



information is accurate and do not have any belief in one way or the other in its accuracy. We do not accept any responsibility to any person for its accuracy and do no more than pass it on. All interested parties should make and rely upon their own inquiries in order to determine whether or not this information is in fact accurate.