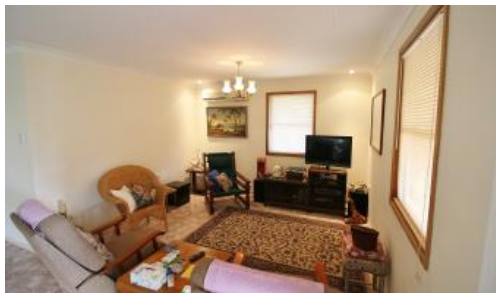




12 Range Cres, Laidley



Tranquil Range Living

You will love coming home to this beauty. Great tranquil living surrounded by birds & wildlife. A great place to retire or raise the family. Situated on a 2.5 acre block with separate living makes this property a rare find.

Upstairs: Open plan dining/kitchen, air conditioned lounge, 2 spacious bedrooms with built-ins, modern bathroom, large internal laundry and L shaped verandah overlooking the valley of Laidley.

Downstairs: Separate living consisting of: Private deck, kitchenette, tiled bathroom, living /dining, 1 bedroom and a separate lounge or can be used as a 2nd bedroom.

Other features include - Solar 1.5kw, gas hot water, 4 rain water tanks, 1 bay LU garage with power & 2 bay attached carport, gravel drive with drainage throughout, great internal & external paint and only a 5 minutes to Laidley township.

Don't miss your chance, call me today to view this wonderful property.

The above information provided has been furnished to us by the vendor/s. We have not verified whether or not that information is accurate and do not have any belief in one way or the other in its accuracy. We do not accept any responsibility to any person for its accuracy and do no more than pass it on. All interested parties should make and rely upon their own inquiries in order to determine whether or not this information is in fact accurate.

3 2 3 10,000 m2

Price	SOLD
Property Type	Residential
Property ID	1503
Land Area	10,000 m2

Agent Details

Nicole Jeeves - 0428 396 589

Office Details

Laidley
150 Patrick Street Laidley QLD 4341
Australia
0754651493

