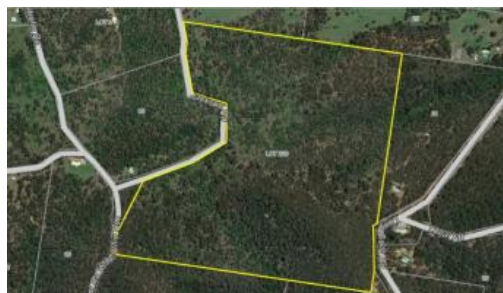


Sold



Lot 226 Jackson, Summerholm



## Very Private Bush Block 160 Acres

If You Want to get away from it all and have you own little hideaway, Than you must see this block because its only 30 minutes from Ipswich and 1 Hour From Brisbane with Beautiful Views, Cleared House or Weekend Hut Sites, Dual Road Access with one being Bitumen, Power at Boundary, Driving Tracks, 2 x Dams and Very Private..

So if you want the space to ride bikes/horses or just love the peace and quiet than you must see this one...

The above information provided has been furnished to us by the vendor/s. We have not verified whether or not that information is accurate and do not have any belief in one way or the other in its accuracy. We do not accept any responsibility to any person for its accuracy and do no more than pass it on. All interested parties should make and rely upon their own inquiries in order to determine whether or not this information is in fact accurate.

 160.00 ac

<b>Price</b>	SOLD for \$300,000
<b>Property Type</b>	Residential
<b>Property ID</b>	1636
<b>Land Area</b>	160.00 ac

### Agent Details

Ramon Bachmann - 0412 751 590  
Nicole Jeeves - 0428 396 589

### Office Details

Laidley  
150 Patrick Street Laidley QLD 4341  
Australia  
0754651493

