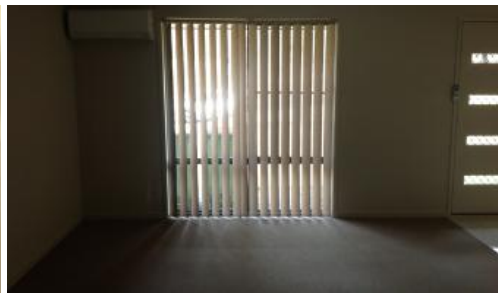




5 Bentley Drive, Regency Downs



## FAMILY HOME ON 1.5 ACRES

This low set brick family home is situated on 1.5 acres in Regency Downs. Features include:

- Four bedrooms all with built in robes
- Tiled dining area
- Separate lounge area with AC
- Modern kitchen with stainless steel appliances including dishwasher
- Covered back patio
- Double lock up garage

Currently tenanted on a Periodic Lease for \$350.00 p/w.. Please allow 24 hours notice to be given before all inspection.

The above information provided has been furnished to us by the vendor/s. We have not verified whether or not that information is accurate and do not have any belief in one way or the other in its accuracy. We do not accept any responsibility to any person for its accuracy and do no more than pass it on. All interested parties should make and rely upon their own inquiries in order to determine whether or not this information is in fact accurate.

4 
 2 
 2 
 6,000 m<sup>2</sup>

**Price** SOLD for \$390,000  
**Property Type** Residential  
**Property ID** 1741  
**Land Area** 6,000 m<sup>2</sup>

### Agent Details

Nicole Jeeves - 0428 396 589

### Office Details

Laidley  
 150 Patrick Street Laidley QLD 4341  
 Australia  
 0754651493

