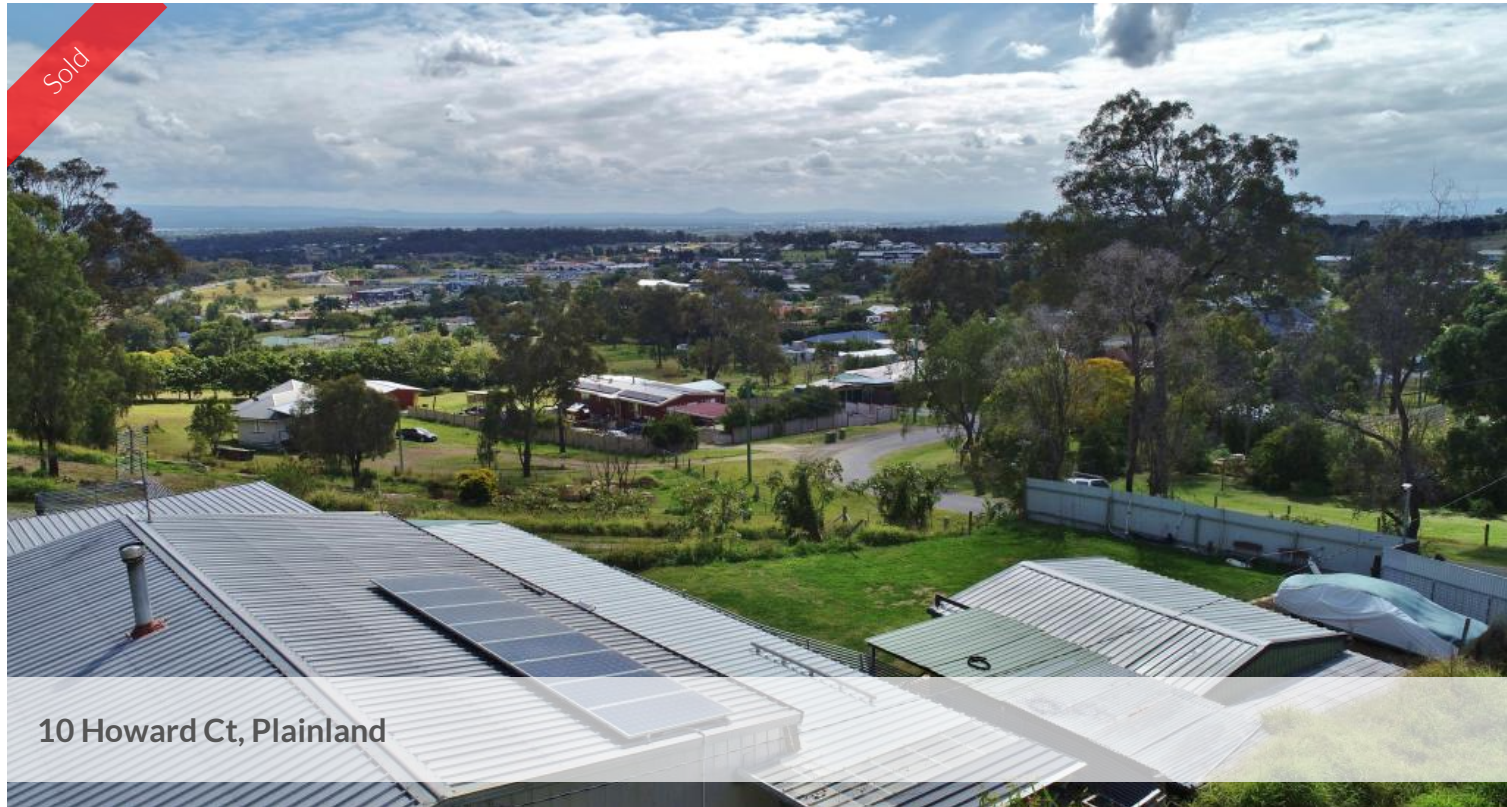


Sold



10 Howard Ct, Plainland



Elevated Position Plainland

Great Block with Views Ready for your new home with the huge bonus of 12m x 9m Shed with Bedroom, Bathroom and Kitchenette. This is sale includes a list of furniture and appliances that are included in the price. Features:

- 12m x 9m Shed with Bedroom, Bathroom and Kitchenette
- A/C , Fire Place, Large Sliding Doors, Mezzanine Floor, Partly Lined
- 6m x 6m Concreted Steel Shed with Lean-to
- 3 Carports with one being higher for Van or Motorhome
- 8 Panel Solar, Full Power Connected, Town Trickle Water, Poly 5000g Tank
- Very Good Views, 5125m2 Block, Great Location on Quiet Cul-De-Sac
- Located in the fast growing and popular Plainland area
- Please note that this is not an approved dwelling

The above information provided has been furnished to us by the vendor/s. We have not verified whether or not that information is accurate and do not have any belief in one way or the other in its accuracy. We do not accept any responsibility to any person for its accuracy and do no more than pass it on. All interested parties should make and rely upon their own inquiries in order to determine whether or not this information is in fact accurate.

 1  1  6  5,125 m2

Price SOLD for \$320,000

Property Type Residential

Property ID 1867

Land Area 5,125 m2

Agent Details

Ramon Bachmann - 0412 751 590

Office Details

Laidley
150 Patrick Street Laidley QLD 4341
Australia
0754651493

