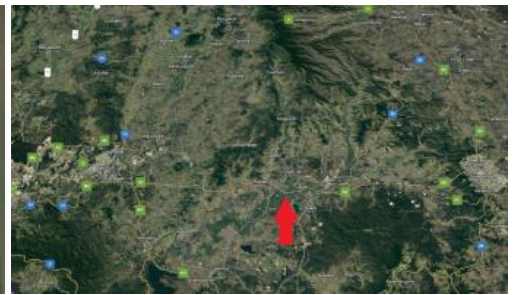




6 Gunn Crt, Crowley Vale



Warrego Hwy Frontage 1.97 Acres Motivated Vendor Wants Sold

Great opportunity to secure a large parcel of Industrial and Business use zoning land in one of the fastest growing corridors in Queensland.

- * 7788m2 or 1.97 acres
- * 80m of Hwy frontage
- * Access of Gunn Crt at rear of Block
- * Three phase electricity to boundary
- * Approx 1hr From Brisbane / 30 Mins to Ipswich / 40 Mins From Toowoomba

Motivated Vendor wants sold asap.

The above information provided has been furnished to us by the vendor/s. We have not verified whether or not that information is accurate and do not have any belief in one way or the other in its accuracy. We do not accept any responsibility to any person for its accuracy and do no more than pass it on. All interested parties should make and rely upon their own inquiries in order to determine whether or not this information is in fact accurate.

7,788 m2

Price SOLD for \$1,000,000
Property Type Residential
Property ID 1939
Land Area 7,788 m2

Agent Details

Ramon Bachmann - 0412 751 590

Office Details

Laidley
 150 Patrick Street Laidley QLD 4341
 Australia
 0754651493

